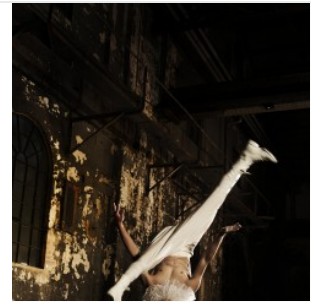


## Previous Works

Year	Title	Choreographer	Music	Design
2009	<b>Spring Dance New Breed</b> (Sydney Opera House)	Emily Amisano, Craig Bary, Connor Dowling		
2008	<b>Meryl Tankard's INUK 2</b> (World Premiere)	Meryl Tankard		Scenic Design Regis Lansac The Tribe The Squierrel Nut ZippThe Enders The End Balkan Beat Box, The wind rises, Elena Chernin, Nina Simone, The Party Meridith Monk, Marlui Mirada, Deep in the heart of Tuva, Songs of the Inuit, Berit Opheim, Meridth Monk.
2008	<b>Sid's Waltzing Masquerade</b> (World Premiere)	Aszure Barton		Sond Design George Gorga Lighting Design Trudy Dalglish Costume Designer - made possible through the support of "To Sir with Love" Michelle Jank
2008	<b>Overture Series Love Instalment</b> (By Shaun Parker)	Shaun Parker		Music Nick Wales and Bree Van Reyk
2007	<b>Ever After Ever</b>	Graeme Murphy		Costume Design Carl Vine Lighting Design Giya Kancheli
2007	<b>Berlin</b>	Graeme Murphy		Costume Design Iva Davies Lighting Design Max Lambert
2007	<b>Gala Performance</b> (Ever After Ever)	Graeme Murphy		Costume Design Matthew Hindson Costume Design Max Lambert Costume Design Linda Nagle Costume Design Iva Davies Costume Design Giya Kancheli Costume Design Graeme Koehne Costume Design Carl Vine
2006	<b>The Director's Cut</b> (by Graeme Murphy)	Graeme Murphy Narelle Benjamin		Set Design Huey Benjamin Lighting Design Damien Cooper Costume Paul Healy



Rafael Bonachela's 360°



Sydney Dance Company

2005	<b>Grand</b> (Full Length)	Graeme Murphy		Music Direction Tracey Mietzke Pianist Anne Sullivan Additional Music Mairi and Pieter de Vries Costume Carole Jaye Costume Stuart Bridgman
2005	<b>Stephen Petronio CompanyThe Gotham Suite</b> (Presented by Sydney Dance Company and Arts Projects Australia)	Stephen Petronio		City of Twist Laurie Anderson Broken Man Blixa Bargeld Lighting Designer Ken Tabachnick
2005	<b>Hua Mulan</b> (In collaboration with the Shanghai Song and Dance Ensemble)	Graeme Murphy		Research and Advice Professor Lilly Lee Scenario Graeme Murphy & Janet Vernon Lighting Design Vicki Fennessy Rehearsal Director / Assistant Choreographer Brett Morgan
2004	<b>Shades of Gray</b> (Full Length)	Graeme Murphy		Lighting Music Director / Sound Design : Paul Healy Costume Damien Cooper Set Jennifer Irwin
2003	<b>Stephen Petronio's Underland</b> (Full Length)	Stephen Petronio	Nick Cave	Costume Ken Tabachnick Lighting Tara Subkoff Video Artist Mike Daly Visual Design Nick Cave and The Bad Seeds
2003	<b>Stephen Petronio's Underland</b> (Full Length)	Stephen Petronio	Nick Cave	Visual Design Ken Tabachnick Video Artist Mike Daly Costume Tara Subkoff Lighting Ken Tabachnick
2003	<b>Know End</b> (Random Play season)	Wakako Asano		Lighting Designer Adrian Sterritt  Random Play Season: Project Coordinator Louis Thorn Video Projection Brett Morgan Design Coordinator Peter Cooke Music Director Michael Askill
2003	<b>Urst</b> (Random Play season)	Simon Turner		Random Play Season: Project Coordinator Peter Cooke Design Coordinator Michael Askill Music Director Adrian Sterritt Lighting Designer Louis Thorn Video Projection Brett Morgan

2003	<b>Emotor</b> (Random Play season)	Gavin Mitford		Lighting Designer Louis Thorn Video Projection Adrian Sterritt Music Director Michael Askill Design Coordinator Peter Cooke  Random Play Season: Project Coordinator Brett Morgan Imagery Christopher Barlow Video Artist Jason Lam
2003	<b>Shifted</b> (Random Play Season)			Design Coordinator Peter Cooke Musical Director Michael Askill Lighting Designer Adrian Sterritt Video Projection Louis Thorn Video Editor Chris Mill  Random Play Season: Project Coordinator Brett Morgan
2001	<b>Ellipse</b> (Full Length)	Graeme Murphy	Matthew Hindson	Set Matthew Hindson Costume Gerard Manion Lighting Akira Isogawa
2001	<b>Boing</b> (Freefall workshop)	Carl Plaisted		
2001	<b>Nomad</b> (Freefall workshop)	Simon Turner		
2001	<b>Synchronicity</b> (Freefall workshop)	Christopher Sheriff		
2001	<b>Emancipate</b> (Freefall workshop)	Josef Brown		
2001	<b>Mbili</b> (Freefall workshop)	Catherine Goss		
2001	<b>Flight</b> (Freefall workshop)	Tracey Carrodus		
2001	<b>Cradle Song</b> (Freefall workshop)	Wakako Asano		Sadia Sadia
2001	<b>Soul Effect</b> (Freefall workshop)	Gavin Mitford		
2001	<b>Tivoli</b> (Full Length)	Graeme Murphy		Costume Graeme Murphy / Kristian Fredrikson Dialogue Frank van Straten Research Damien Cooper Lighting Brian Thomson Scenario Linda Nagle / Paul Chubb Set Kristian Fredrikson

2000	<b>Mythologia</b> (Full Length)	Graeme Murphy		Set George Freedman / Ralph Rembel Costume Carl Vine [commissioned score] Featuring The Sydney Gay and Lesbian Choir Lighting Richard de Chazal Video Imagery Martin Crouch / Norah Mulroney
2000	<b>Body of Work</b> (Full Length)	Graeme Murphy		Set Collage Video Montage Kristian Fredrikson Lighting Philippe Charluet
1998	<b>Party</b> (Full Length)	Graeme Murphy		Design Concept Michael Askill / Daniel Askill [commissioned score]
1998	<b>Wakattack</b> (New Blood workshop)	Kip Gamblin		
1998	<b>Inner Piece</b> (New Blood workshop)	Simon Turner		Costume Brett Chamberlain
1998	<b>In Time</b> (New Blood workshop)	Sally Wicks		Cinematography Mark Lapwood
1998	<b>Grace</b> (New Blood workshop)	Gavin Mitford		Photography Joanna McCubbin
1998	<b>Unwitting Sight</b> (New Blood workshop)	Wakako Asano		
1998	<b>One</b> (New Blood workshop)	Catherine Goss		
1998	<b>Salome</b> (Full Length)	Graeme Murphy		Set Design John Rayment / Graeme Murphy Costume Design Akira Isogawa Lighting Design John Rayment
1998	<b>Air and Other Invisible Forces</b> (Full Length)	Graeme Murphy	Michael Askill	Lighting Design Damien Cooper Costume Design Michael Askill [commissioned score] Set Design Giya Kancheli
1998	<b>Hala [Still]</b> (New Blood workshop)	Josef Brown		Cinematography Collage
1996	<b>Into Dharma</b>	Stephen Baynes		Lighting John Rayment Costume Stephen Baynes / Wakako Asano
1996	<b>Thwack!</b>	Garry Stewart		Lighting Panos Couros Joey Baron Costume John Rayment
1996	<b>Radical Study</b>	Graeme Murphy		Lighting Graeme Murphy Costume -
1996	<b>Table Talk</b>	Moses Pendleton		Lighting Massive Attack [G.Marshall / A.Dei Naja / W.Cobham / S.Nelson]

1996	<b>Free Radicals</b> (Full Length)	Graeme Murphy	Costume John Rayment Lighting Michael Askill [commissioned score] Set Matthew Serventy
1996	<b>Master Plan</b>	Paul Mercurio	Lighting Quickmix
1996	<b>Kyu</b>	Carl Plaisted	Lighting John Rayment Costume Carl Plaisted
1996	<b>Dancing with the Clown</b>	Paul Mercurio	Lighting John Rayment Costume Paul Mercurio
1996	<b>Embodied</b> (for Mikhail Baryshnikov's White Oak Dance Project)	Graeme Murphy	Costume Graeme Murphy
1995	<b>Fornicon</b> (Full Length)	Graeme Murphy	Lighting John Rayment Costume Jennifer Irwin Set Brain Thomson
1994	<b>Berlin</b> (Full Length)	Graeme Murphy	Costume Jennifer Irwin Set John Rayment Lighting Andrew Carter
1994	<b>Saccharin Suite</b>	Gideon Obarzanek	Costume Jennifer Irwin Set Matthew Serventy
1994	<b>Sensing</b> (for ABC-TV)	Graeme Murphy	Set Jennifer Irwin Costume ABC-TV
1994	<b>The Trojans</b> (for the Australian Opera & Sydney Dance Company)	Graeme Murphy	Set & Costume Hector Berlioz Lighting John Rayment
1994	<b>The Care Factor</b> (Raw workshop)	James Taylor	
1994	<b>Propel</b> (Raw Workshop)	Rosetta Cook	
1994	<b>908</b> (Raw Workshop)	Carl Plaisted	
1994	<b>Bird of a Passage</b> (Raw Workshop)	Bill Pengelly	
1994	<b>Violins of Blood</b> (Raw Workshop)	Louise Deleur	
1994	<b>Red Roses</b> (Raw Workshop)	John Stienman	
1994	<b>Tres Piesas</b> (Raw Workshop)	Alfred Taahi	
1994	<b>Dead Heart #3</b> (Raw Workshop)	Glen Murray Jamie Fielding	
1994	<b>On the Run</b> (Raw Workshop)	Brett Morgan	
1993	<b>The Protecting Veil</b>	Graeme Murphy	Costume Jennifer Irwin Design in Light John Rayment
1993	<b>Beauty and the Beast</b> (Full Length)	Graeme Murphy	Costume Kristian Fredrikson Design in Light John Rayment
1992	<b>Piano Sonata</b>	Graeme Murphy	Costume Jennifer Irwin Design in Light Roderick Van Gelder, Graeme Murphy

1992	<b>Gloria</b>	Douglas Wright	
1992	<b>Synergy with Synergy</b> (Full Length)	Graeme Murphy	Lighting Collage Costume John Rayment Set Jennifer Irwin
1992	<b>Edgeing</b>	Paul Mercurio	
1991	<b>Monkey See</b>	Kim Walker	
1991	<b>Bard BitsThe Shakespeare Dances</b>	Graeme Murphy	Set Cleo Laine John Dankworth Costume Ross Philip
1991	<b>Sleep No MoreThe Shakespeare Dances</b>	Gideon Obarzanek	
1991	<b>Before the WordThe Shakespeare Dances</b>	Kim Walker	
1991	<b>HamletThe Shakespeare Dances</b>	Adrian Batchelor	
1991	<b>Lucrece</b> (commissioned score)	Alfred Taahi	
1991	<b>MooggrahThe Shakespeare Dances</b>	Stephen Page	
1990	<b>Soft Bruising</b> (Full Length)	Graeme Murphy Steve Martland	Lighting George Freedman Costume Gavin Bryars Set John Rayment
1990	<b>In the Company of Wo/men</b> (Full Length)	Graeme Murphy Paul Mercurio	Costume Rosemary Grant Set Ardea Oosthuizen
1989	<b>King Roger</b> (Full Length)	Graeme Murphy	Lighting Kristian Fredrikson
1989	<b>Waiting</b>	Paul Mercurio	
1989	<b>Dancing with I</b>	Paul Mercurio	
1989	<b>Song of the Night</b>	Graeme Murphy	
1989	<b>Arbos</b>	Ohad Naharin	Costume Jennifer Irwin Drawing Vesna Golubovic
1989	<b>Happy Trials</b>	Ralph Lemon	Decor Chris Kaufman Costume Ralph Lemon
1989	<b>Evening Suite</b>	Graeme Murphy	
1989	<b>Cafe</b>	Kim Walker Paul Mercurio	Costume Paul Mercurio Rosemary Grant Set Kim Walker
1988	<b>Vast</b> (Full Length [for the Bicentennial Authority])	Graeme Murphy	Lighting Kenneth Rayner Costume Jennifer Irwin Set Andrew Carter
1988	<b>Kraanerg</b> (Full Length)	Graeme Murphy	Set Jennifer Irwin Lighting George Freedman Costume  John Drummond Montgomery
1988	<b>Song of the Night</b>	Graeme Murphy	
1987	<b>Late Afternoon of a Faun</b>	Graeme Murphy	Lighting  John Drummon Montgomery Set & Costume  Kristian Fredrikson
1987	<b>Tabula Rasa</b>	Ohad Naharin	

1987	<b>Afterworlds</b>	Graeme Murphy	Costume Anthony Jones Set Alan Oldfield Lighting Collage
1987	<b>Radar</b> (Risks II Workshop)	Nina Veretennikova	
1987	<b>Late Show</b> (Risks II Workshop)	Nina Veretennikova	
1987	<b>Siren</b> (Risks II Workshop)	Adrian Batchelor	
1987	<b>Two Men &amp; One Woman</b> (Risks II Workshop)	Paul Mercurio	
1987	<b>Duet for Two Boys</b> (Risks II Workshop)	Paul Mercurio	
1987	<b>Untitled</b> (Risks II Workshop)	Michael Hennessy	
1986	<b>Nearly Beloved</b> (Full Length)	Graeme Murphy	Lighting  John Drummond Montgomery Costume Anthony Jones Set Stephen Curtis
1986	<b>Two-Tone</b> (Risks II Workshop)	Victoria Taylor	
1985	<b>Shimmering</b> (later became Shining, Act II)	Graeme Murphy	
1985	<b>Sirens</b> (Full Length)	Graeme Murphy Michael Hennessy Victoria Taylor Francoise Philipbert Paul Mercurio	Costume Jennifer Irwin Set Anthony Jones
1985	<b>Shining</b>	Graeme Murphy	Set Andrew Carter
1985	<b>Boxes</b> (Full Length)	Graeme Murphy Bob Kretschmer	Lighting  John Drummond Montgomery Costume Anthony Jones Set Laurence Eastwood
1984	<b>After Venice</b> (Full Length)	Graeme Murphy	Lighting  John Drummond Montgomery Set & Costume  Kristian Fredrikson
1984	<b>Black &amp; Blue</b>	Louis Falco	
1984	<b>Old Friends, New Friends</b> (later became Nearly Beloved, Act III)	Graeme Murphy	Costume Anthony Jones Set Stephen Curtis
1984	<b>Deadly Sins</b> (Full Length)	Graeme Murphy	Costume Robert Dein Set Collage
1983	<b>The Selfish Giant</b> (Full Length)	Graeme Murphy	
1983	<b>Flashbacks</b> (Full Length)	Graeme Murphy	
1983	<b>Some Rooms</b> (Full Length)	Graeme Murphy	Video Artist Jason Lam Set KATI LEHTONEN Costume MARGARET WHITTINGHAM Lighting Keith Jarrett
1983	<b>Triquetra</b> (Risks Workshop)	Peter Matthew	

1983	<b>Cockyrot</b> (Risks Workshop)	Ross Philip	
1983	<b>Phases</b> (Risks)	Mike Mullins	
1983	<b>Snow White</b> (Risks Workshop)	Kai Tai Chan	
1983	<b>Still Life</b> (Risks Workshop)	Paul Mercurio	
1982	<b>Daisy Bates</b>	Barry Moreland	
1982	<b>Wilderness</b>	Graeme Murphy	
1982	<b>Limited Edition</b> (Full Length)	Graeme Murphy	
1982	<b>Hate</b>	Graeme Murphy	Lighting Carl Vine [commissioned score]
1982	<b>Mansions</b>	Barry Moreland	
1982	<b>LM514</b>	Graeme Watson	
1982	<b>Strangers</b>	Carl Morrow	
1982	<b>Suite for a Lonely Child</b>	Andris Toppe	
1982	<b>Homelands</b>	Graeme Murphy	Lighting Kenneth Rowell Set & Costume Leos Janacek
1982	<b>On Your Mark</b> (Risks Workshop)	Helen Simondson	
1981	<b>An Evening</b> (Full Length)	Graeme Murphy	Lighting John Rayment Set & Costume  Kristian Fredrikson
1981	<b>Eclipse</b>	Carl Morrow	
1980	<b>Daphnis and Chloe</b>	Graeme Murphy	Lighting John Rayment Set & Costume  Kristian Fredrikson
1980	<b>Animus</b>	Joseph Scoglio	
1980	<b>Viridian</b>	Graeme Murphy	Design in Light John Rayment
1980	<b>Interiors</b>	Paul Saliba	
1980	<b>One</b>	Paul Saliba	
1980	<b>Dialogues</b>	Barry Moreland	
1979	<b>Shéhérazade</b>	Graeme Murphy	Lighting John Rayment Set & Costume  Kristian Fredrikson
1979	<b>The Perils of Pauline</b>	Graeme Watson	
1979	<b>Rumours I &amp; III</b> (Completion of Trilogy)	Graeme Murphy	Set & Costume Alan Oldfield Lighting Barry Conyngham
1979	<b>Signatures</b>	Graeme Murphy	
1979	<b>Soft But Still Firm</b>	Graeme Watson	
1979	<b>Chore Blues</b>	Ross Philip	
1978	<b>White Women</b>	Graeme Watson	
1978	<b>Jada</b>	Eleo Pomare	
1978	<b>Poppy</b> (Full Length)	Graeme Murphy	Set/Costume Revision  Kristian Fredrikson



1978	<b>Rumours II</b> (Part of a Trilogy completed in 1979)	Graeme Murphy	Lighting John Rayment Set Alan Oldfield
1978	<b>Everyman's Troth</b>	Don Asker	
1978	<b>Regale</b>	Graeme Watson	
1976	<b>Up</b>	Graeme Murphy	
1976	<b>Solo for Mitch</b>	Jaap Flier	
1976	<b>Scintillation</b>	Graeme Murphy	
1976	<b>Papillion Duet</b>	Graeme Murphy	
1976	<b>Fire Earth Air Water</b>	Graeme Murphy	
1976	<b>Sequenza VII</b>	Graeme Murphy	
1976	<b>3rd Conversation</b>	Graeme Murphy	
1976	<b>Mirage</b>	Leigh Warren	
1976	<b>Glimpses</b>	Graeme Murphy	
1976	<b>Deserts</b>	Anna Sokolow	
1976	<b>Carmina Burana</b>	John Butler	
1976	<b>Constant Reach</b>	Chrissie Koltai	
1976	<b>Two Numbers</b>	Ian Spink	
1976	<b>Medieval Malics</b>	Graeme Watson	
1976	<b>Hy-Kyo</b>	Jaap Flier	
1976	<b>A Gathering of Vagrants</b>	Graeme Watson	
1976	<b>Toccata</b>	Andris Toppe	
1976	<b>Volumina</b>	Graeme Murphy	
1976	<b>Mahler Pas De Deux</b>	Morman Morrice	
1976	<b>A Clear Space</b>	Daniel Mahoney	
1976	<b>Tip</b>	Graeme Murphy	